

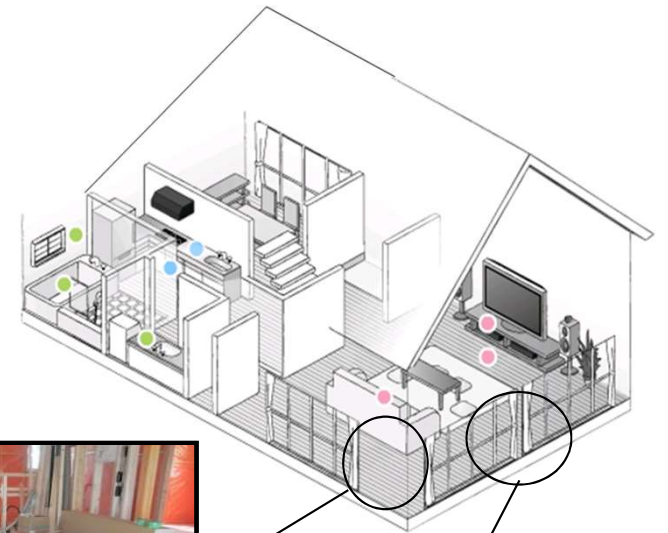
Removable Masking Tape for Floor/Wall

What is Masking Tape?

Tapes used to fix curing sheets applied to prevent stains and scratches on floors and walls during construction.

SEKISUI's Advantage

- Removable
- Non-adhesive residue
- Usable with various materials
- Tear-able by one hand



Removable Masking Tape for Floor/Wall

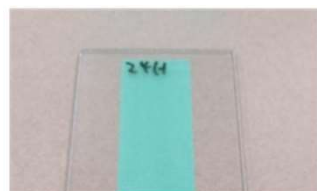
Property and Structure

Property	Unit	OPP	Kraft tape	Masking
Thickness	μm	50	140	105
SP Adhesion	N/10mm	2.5	3.3	2.2
Tack	1/32IN	17	12	17
Unwinding force	N/10mm	1.2	0.5	0.5
Tensile strength	N/10mm	39	60	40

Masking Tape Structure

Release layer
Recycle PET (Tape Carrier)
Acrylic (Adhesive)

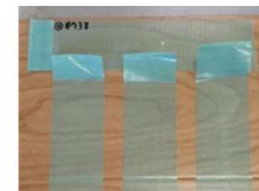
Removable with various materials



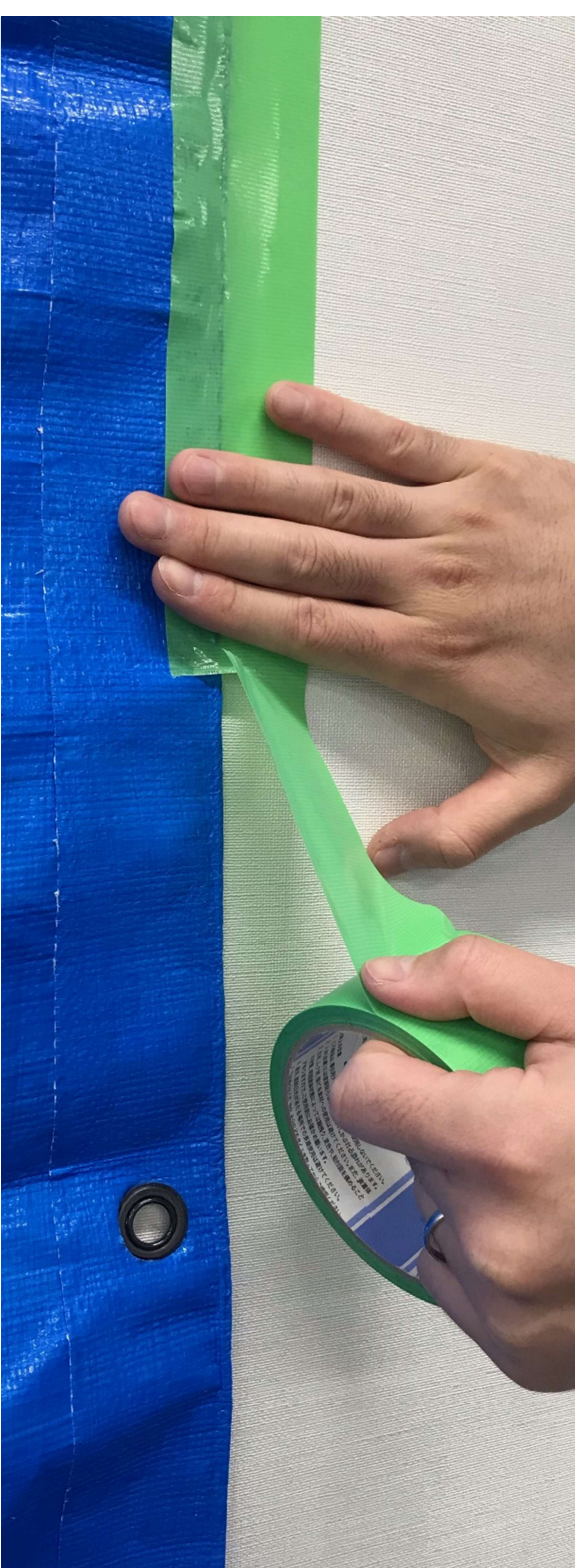
Glass



Aluminum



Wood

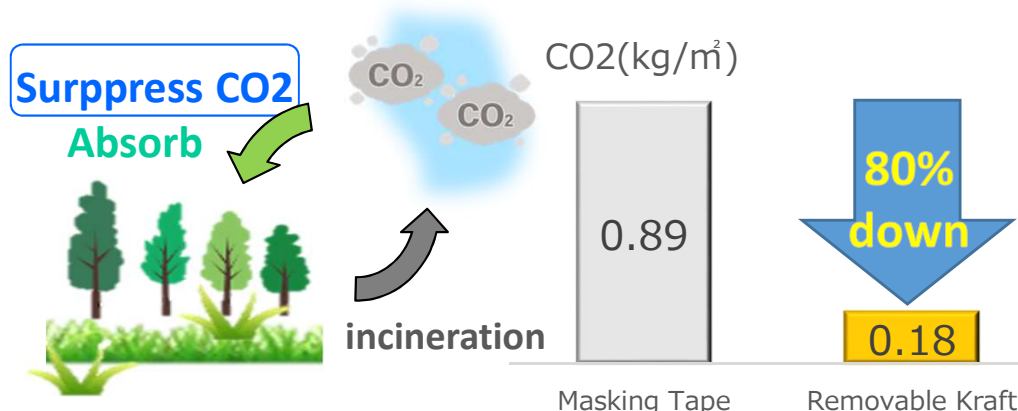


Eco-friendly

Removable Kraft Tape

Eco-friendly

CO2 Emission



Basic specifications

			Removable Masking Tape	Kraft Tape	Removable Kraft
Tape	Tape carrier		PET cloth	Kraft Paper	Kraft Paper
	Adhesive		Acrylic	Rubber	Acrylic
Property	Thickness	μm	105	140	125
	SP Adhesion	N/10mm	2.2	3.3	2.2
	Tack	1/32IN	16	12	10.3
	Unwinding force	N/10mm	0.6	0.5	0.3
	Tensile strength	N/10mm	40	60	63.1
	Tear-able by hand	-	+++	++	++
	Eco-friendly	-	-	++	++
	Removability	-	++	-	++

Bio-based

0%

Release layer
Base (PET cloth)
Adhesive (Acrylic)

Masking Tape

56%

Release layer
Base (Kraft paper)
Adhesive (Acrylic)

Removable Kraft



Precautions for use

- (1) This product is a curing tape. Do not use for electrical insulation.
- (2) Do not apply directly to skin as it may cause irritation.
- (3) Do not use on plain wood, natural wood, marble, vinyl chloride material, or newly painted surfaces. Depending on the adherend material and surface coating condition, adhesive residue, discoloration, or damage to the adherend surface may occur. Please check before use.
- (4) Do not use the product outdoors or in direct sunlight for a long period of time, as the adhesive may remain on the surface.
- (5) Wipe off dust, oil, moisture, etc. on the surface before use.
- (6) Keep the tape in a cool place away from high temperatures and direct sunlight.

Contact address : contact_tape@sekisui.com